

9b



**RED HOT
CHILLI
PIPERS**

TECHNICAL SPECIFICATION

9 PIECE BAND

& COMFORT RIDER

PLUS BRASS

WWW.REDHOTCHILLIPIPERS.COM

TECHNICAL SPECIFICATION

9 PIECE BAND

& COMFORT RIDER



RED HOT CHILLI PIPERS - SOUND

The Red Hot Chilli Pipers use 8 wireless systems when performing. These are used on the 3 pipers, the marching snare drummer, the djembe, the guitar and bass players. The band will supply all radio systems and microphones **for these instruments only**.

The band also use the following instruments. These require the appropriate microphones and DI's to be provided. **Please refer to our STAGE PLAN.**

5 Piece Drum Kit
Electric Guitar (DI x1)
Bass Guitar (DI x1)
Keyboard (DI x3)
Laptop (DI x1)
Electronic Percussion (DI x1)
Percussion (3 x SM57)
Vocal x 2 (SM58 radio microphones x2)
3 Piece Brass Section (3 x SM57)

TECHNICAL SPECIFICATION

9 PIECE BAND

& COMFORT RIDER



FOH SPEAKER SYSTEM

A first class speaker system (L'acoustics / d&b) should be provided, covering 100% of the audience area and should be flown wherever possible. In fills and out fills should be used where appropriate.

Midas XL8

Pro 9

Pro 6

Pro 2

H3000

OR **Yamaha** PM 5000

PM 5D-RH

M7CL

are our preferred consoles. **No LS9 or Behringer consoles please.**

The band also require;

- 4 channels of gate and 8 channels of quality compression (DBX 160sl or DBX 160).
- 3 multi FX unit's, we would recommend Yamaha SPX990 or equivalents.

No Behringer please.

All microphones as specified on our **CHANNEL LIST**. Please ensure that all cabling and equipment is well maintained and buzz free.

An English speaking system technician should be on hand from load in until the end of the show.

MONITOR SYSTEM

A first class monitor system should be provided including 9 identical wedges, 2 x appropriate side fill and 1 drum sub. System must be capable of providing AT LEAST 14 mixes.

Midas XL8

Pro 9

Pro 6

Pro 2

H3000

OR **Yamaha** PM 5000

PM 5D-RH

M7CL

are our preferred consoles. **No LS9 or Behringer consoles please.**

Quality 31 band EQ inserted across the mix outputs. **No Yamaha 2031's please.**

An English speaking system technician should be on hand from load in until the end of the show.

TECHNICAL SPECIFICATION

9 PIECE BAND

& COMFORT RIDER



MAINS POWER LOCATIONS

Power is required at side of stage, next to the multicore. This is for our 8 receiver boxes and antenna distribution system. Power is also required at downstage left and right and upstage left and right.

Please refer to **STAGE PLAN**.

RISER REQUIREMENTS

The Red Hot Chilli Pipers require risers for the drum kit (8ft x 8ft), keyboards (8ft x 6ft) percussion (8ft x 6ft) and brass (8ft x 6ft). These should be a **minimum height of 1ft**.

FREQUENCIES

The Red Hot Chilli Pipers use 8 Sennheiser radio systems, using channel 38.

TECHNICAL SPECIFICATION

9 PIECE BAND

& COMFORT RIDER



FOH CHANNEL INPUT LIST

CHANNEL	INSTRUMENT	MIC	FOH INSERT	48v
1	Kick 1	SM91	Gate	48v
2	Kick 2	Beta 52		
3	Snare Top	SM57		
4	Snare Bottom	SM57		
5	Hi-Hats	Condenser		48v
6	Rack Tom 1	504/98	Gate	48v
7	Rack Tom 2	504/98	Gate	48v
8	Floor Tom	504/98	Gate	48v
9	Ride Cymbal	Condenser		48v
10	Over Head 1	Condenser		48v
11	Over Head 2	Condenser		48v
12	Bass Guitar	DI	Comp	48v
13	Electric Guitar	DI		48v
14	Keyboard L	DI	Comp	48v
15	Keyboard R	DI	Comp	48v
16	Synth	DI	Comp	48v
17	Laptop	DI	Comp	48v
18	Marching Snare	XLR from us		
19	Djembe/Quads	XLR from us		
20	Piper 1	XLR from us		
21	Piper 2	XLR from us		
22	Piper 3	XLR from us		
23	Drones	XLR from us		
24	Radio Mic 1	Please supply	Comp	
25	Radio Mic 2	Please supply	Comp	
26	Elec. Percussion	DI		48v
27	Conga 1	SM57		
28	Conga 2	SM57		
29	Shaker	SM57		
30	Acoustic Guitar	DI	Comp	48v
31	Saxophone	SM57		
32	Trumpet	SM57		
33	Trombone	SM57		

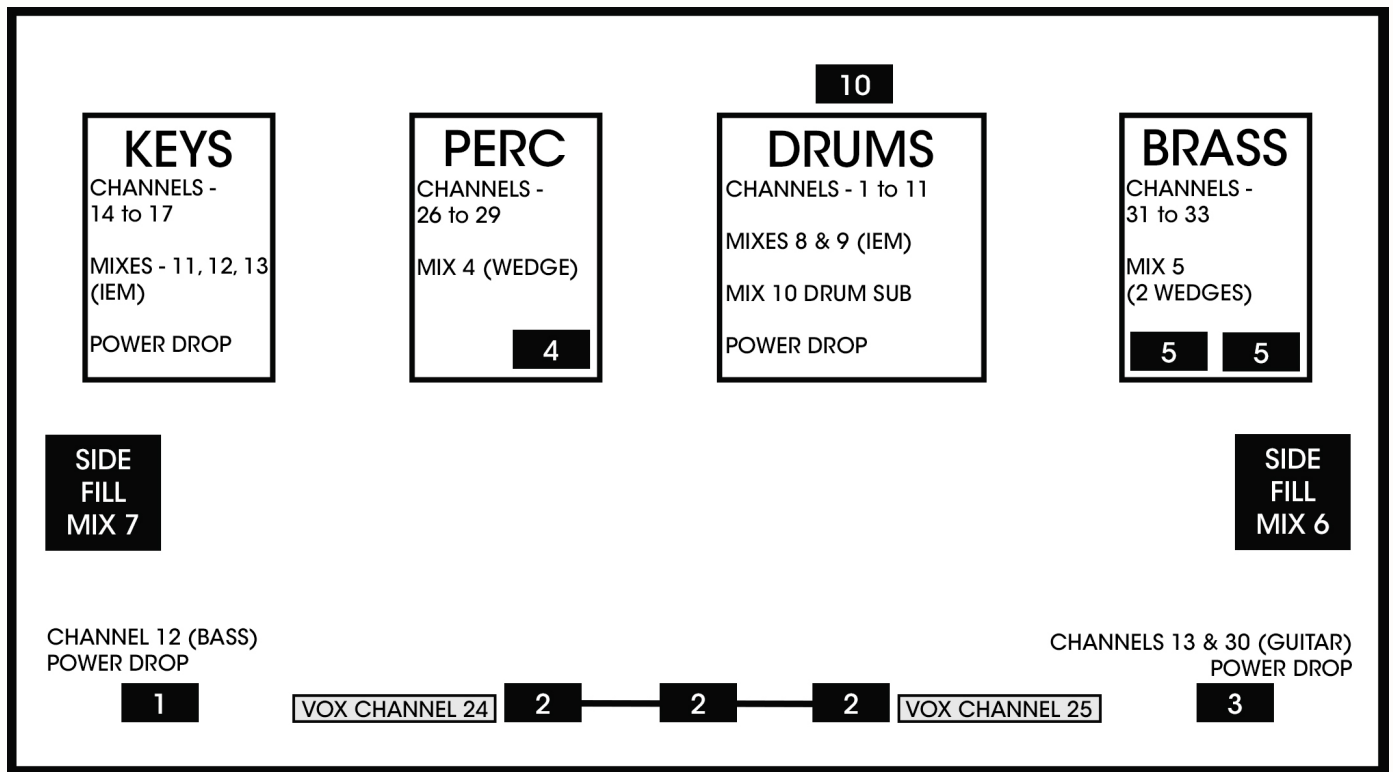
TECHNICAL SPECIFICATION

9 PIECE BAND

& COMFORT RIDER



STAGE PLAN - SOUND



All receiver boxes should be kept at the side of the stage and require access to 8 mains sockets.

Mix 1 : Bass

Mix 2 : Pipes / Vocals

Mix 3 : Electric Guitar / Acoustic Guitar

Mix 4 : Percussion

Mix 5 : Brass

Mix 6 : Side fill stage L

Mix 7 : Side fill stage R

Mix 8 : Drum Kit IEM L

Mix 9 : Drum Kit IEM R

Mix 10 Drum Sub

Mix 11 : Keys IEM L

Mix 12 : Keys IEM R

Mix 13 : Keys IEM STEMS

ALL IN EAR MIXES ARE HARD WIRED - PLEASE SUPPLY XLR's DIRECT FROM MONITOR CONSOLE.

TECHNICAL SPECIFICATION

9 PIECE BAND

& COMFORT RIDER



RED HOT CHILLI PIPERS - LIGHTS

The **Red Hot Chilli Pipers** show is a stage full of energetic musicians who will use all available stage space, our lighting show is equally as energetic. The Chilli's love to see the the crowd having a good time, so its important that the audience is lit too.

Front Truss

(12m minimum)

- 10 x Robe 600 LED Wash.
- 2 x Source 4, 26 degree with iris (mounted top upstage cord).
- 3 x Source 4, 19 degree (mounted top upstage cord).
- 6 x 8 cell blinders (mounted top downstage cord).
- 1 x truss ladder.

Back Truss

(12m minimum)

- 5 x Martin 700 wash in basic mode
- 4 x Martin 700 profile in extended mode
- 4 x 4 way ACL bars (2 dimmers) (mounted top downstage cord)
- 1 x Black backdrop to suit length of truss.
- 1 x truss ladder

Floor:

- 4 x Martin 700 profiles in extended mode (to sit on mac cases, please mask these cases in black)
- 3 x 8 cell blinders (floor mounts)
- 4 x Martin Atomic 3000 Strobe in mode 4 full power
- 2 x 4 way ACL bars (1 dimmer)
- 2 x follow spot stand (to mount ACL bars)

The Rest:

- Hazers and fans to suit venue.
- 1 x intercom FOH to dimmers (single muff FOH)
- Dimmers, PSU, DMX splitters, cables etc to suit rig.
- FOH DMX snake (minimum of 3 lines) or 2 x Cat5 (one spare).

Please insure that all your system is working and on our arrival. We like smoke machines, but please DMX or a control unit FOH. We need a haze during the concert, so please something that fills the stage and can cope with any ventilation in the venue.

Substitutes for moving lights should be approved by our Lighting Engineer. We prefer profiles to be a 575 CMY unit. The back wash movers can be LED such as Mac Aura. The front wash can be discharge units such as a Mac 700 wash. We do have some flexibility in fixture choices, but please contact our **Andrew Pattern** regarding any changes.

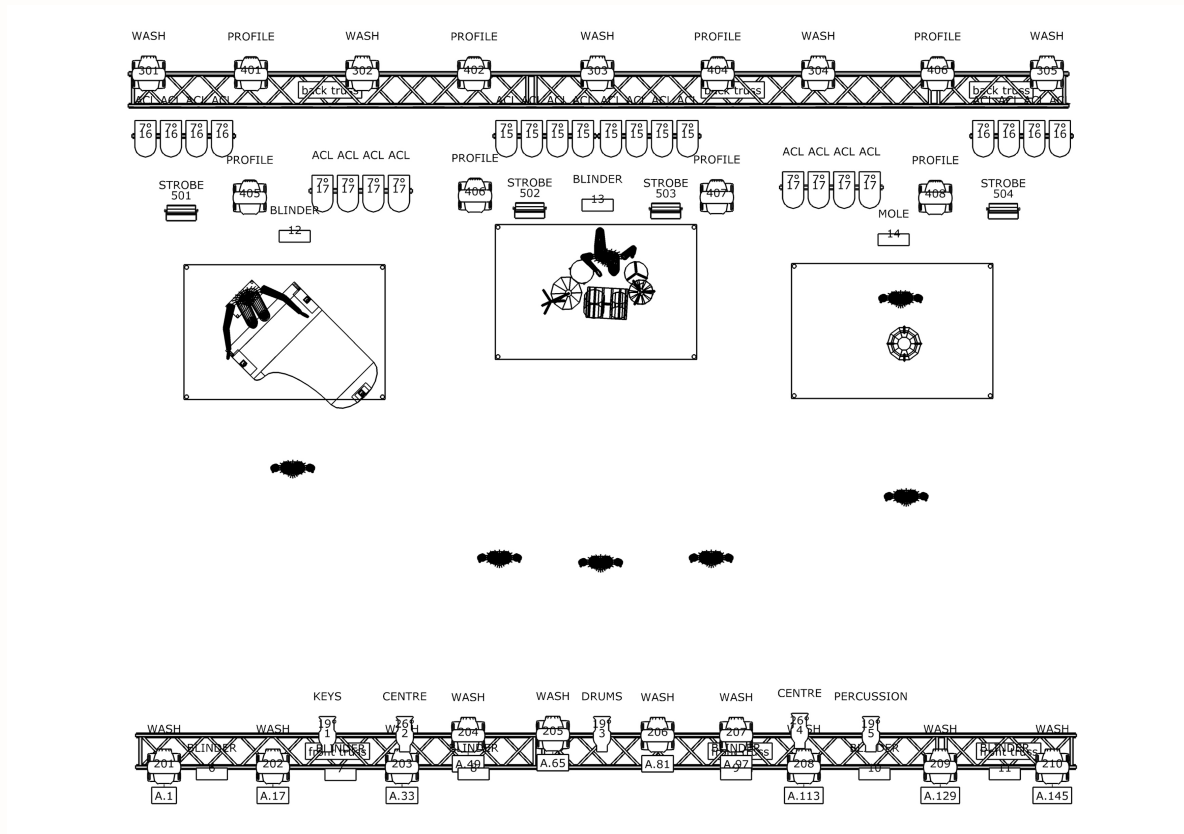
TECHNICAL SPECIFICATION

9 PIECE BAND

& COMFORT RIDER



STAGE PLAN - LIGHTS



TECHNICAL SPECIFICATION

9 PIECE BAND

& COMFORT RIDER



RED HOT CHILLI PIPERS - COMFORT RIDER DRESSING ROOMS

2 lockable dressing rooms and 1 lockable production office.

The dressing rooms should be equipped with comfortable chairs, an iron and ironing board, a table and a mirror.

Please ensure that the dressing rooms are **non-smoking** for the duration of our stay.

TO EAT

- 1 deli tray prepared for **16 people** – meats (not processed), cheese, veg, salads etc.
- 1 tub of coleslaw
- 1 tub of tuna sandwich mix.
- 1 tub of chicken sandwich mix.
- A selection of dips and nachos.
- A selection of white and brown sandwich bread and bread rolls.
- Butter, low fat spread, Hellmann's mayonnaise, Colman's English mustard.
- A selection of fresh fruit.
- A small selection of cakes and biscuits.

NO PRE-PACKAGED SANDWICHES

TO DRINK

- 48 x 0.5ltr bottles of **still** water
- 2 ltr of orange juice.
- 1 ltr of apple juice.
- 24 cans/bottle of Coke light.
- 24 bottles (no cans) of your finest local beer.
- 2 bottles of good red wine.
- 1 bottles of good white wine.
- 1 bottle of good 12 year old (or more) **single malt scotch** whisky.
- 1 bottle of Smirnoff Vodka

THE REST

10 small towels and 10 large towels (black).

Real plates and cutlery, no plastic please.

Glasses, cups and napkins.

Tea and Coffee making facilities with milk and sugar – no instant coffee.

EVENING MEAL

A **hot 3 course meal** should be provided for 16 people. Or £15.00 / €20.00 / \$25.00USD buy-out per person.

Please provide for one vegetarian.

Thank you for your co-operation, if you have any questions regarding our comfort rider then please do not hesitate to contact our Band/Tour Manager.

CONTACT

Kevin MacDonald (Band Manager)

+44 7879 443548
piper1978@me.com

WWW.REDHOTCHILLIPIPERS.COM

TECHNICAL SPECIFICATION

9 PIECE BAND

& COMFORT RIDER



RED HOT CHILLI PIPERS - CONTACT INFORMATION

Please do not hesitate to contact one of our team if you are experiencing difficulty with anything included in our specification and comfort rider.

BAND / TOUR MANAGER

Kevin MacDonald

+44 7879 443548

piper1978@me.com

SOUND ENGINEER

Joe Thomas

+44 7889 411093

joe@redhotchillipipers.co.uk

joethomas1@sky.com

SOUND ENGINEER

Alex McNutt

+44 7947 469599

a_lexatlanta@yahoo.co.uk

LIGHTING ENGINEER

Andrew Pattern

+48 6981 48785

+44 7724 740628

inthe128@me.com